

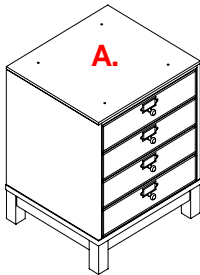
pottery barn kids

SCHOOLHOUSE EXTRA LONG DESK

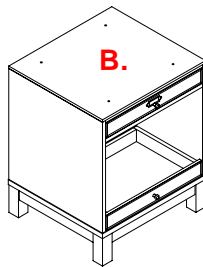
PRE-ASSEMBLY:

- For your safety and ease, assembly by two adults is recommended.
- Please read all instructions before beginning assembly. The illustrations provided allow for easier assembly when used in conjunction with the assembly instructions.
- Remove all parts and hardware from box and lay out on a carpeted or scratch-free work surface. The shipping box provides an ideal work surface. Do not dispose of any contents until assembly is completed to avoid accidentally discarding small parts or hardware.
- Use the parts and hardware lists to identify and separate each of the pieces included prior to starting assembly.
- Note: DO not fully tighten the bolts until all parts are in place. Failure to follow these instructions may cause the bolts to misalign during assembly.
- The use of power tools for assembly is not recommended. Power tools can damage hardware or split wood.

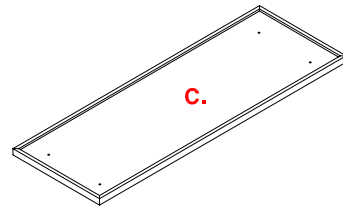
PARTS INCLUDED:



A). Craft Storage Base


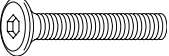




B). Printer Base



C). Extra Long Desktop

HARDWARE INCLUDED:

 (D) Allen Key – 1pc	 (E) Allen Bolt 1/4" x 25mm – 4pcs
 (F) Spring Washer – 4pcs	 (G) Flat Washer – 4pcs

ASSEMBLY INSTRUCTIONS:

1. Remove top drawers from the Craft Storage Base and Printer Base. To release top drawer from the Printer Base, push the triggers located on both sides of the drawer box to detach it from the base. You may find it helpful to use a tool, such as a screwdriver, to accomplish this task. (Fig. 1).

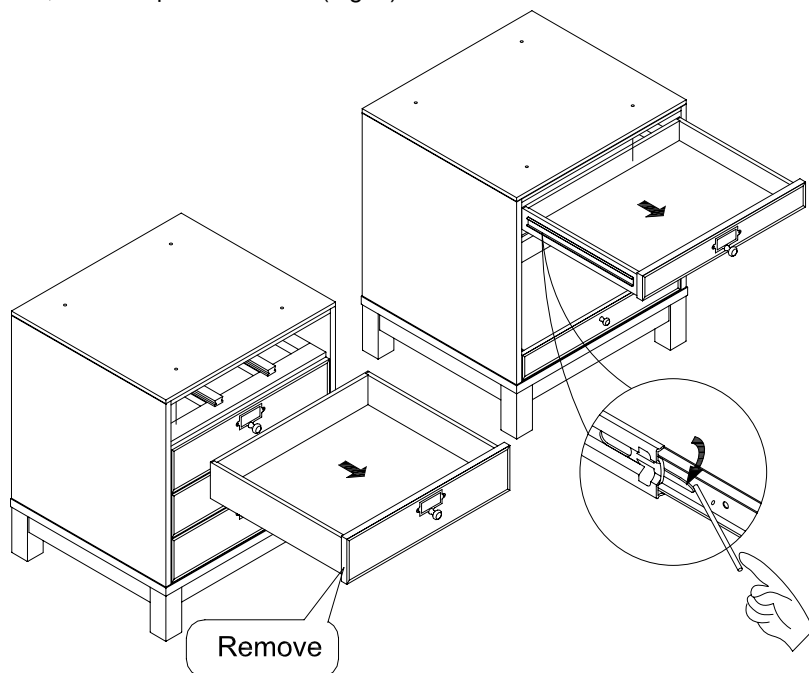


Figure 1

2. Place the Craft Storage Base and Printer Base in the desired location and put the Extra Long Desktop on the two bases. Slide a Spring Washer (F) and a Flat Washer (G) into an Allen Bolt (E) and insert the Allen Bolt from interior of the base into the insert nut located on bottom of the Extra Long Desktop piece and secure with an Allen Key (D). Do not tighten. Repeat with the remaining Allen Bolts (Fig. 2).
3. Once all bolts are installed, check alignments and tighten all bolts.

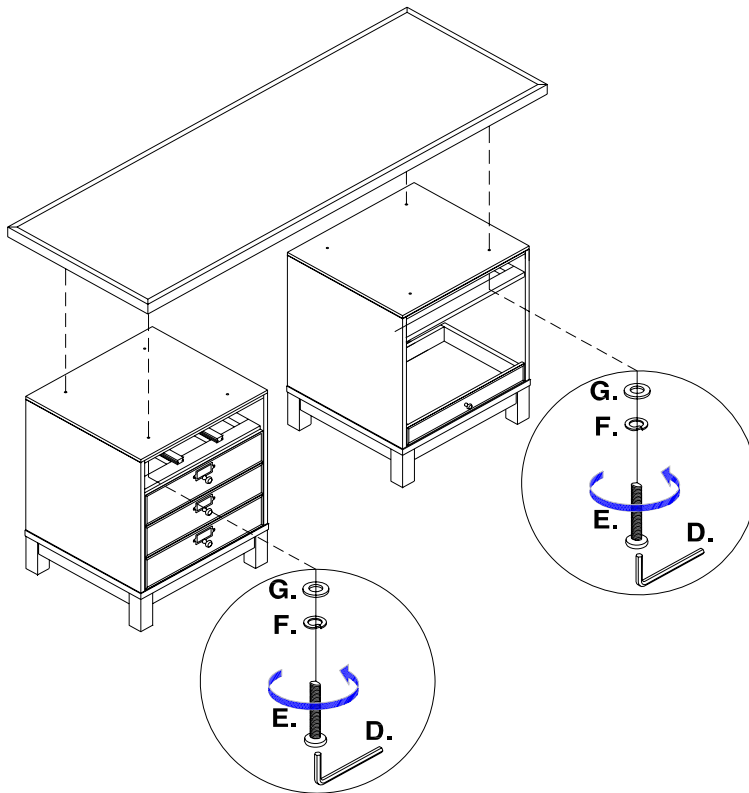


Figure 2

4. Insert the top drawers into the bases. If needed, adjust the pre-attached levelers on bottom of base legs to keep the desk level (Fig. 3).

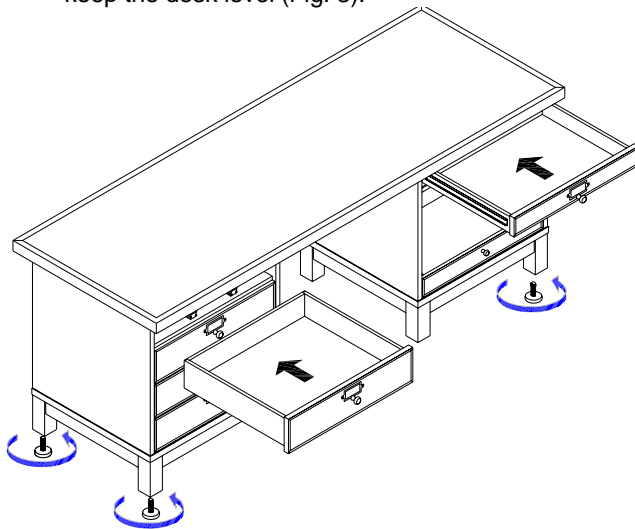


Figure 3

CARE INSTRUCTIONS:

- Dust often using a clean, soft, dry lint-free cloth.
- Blot spills immediately, and wipe with a clean, damp, cloth.
- We do not recommend the use of chemical cleansers, abrasives, or furniture polish on our lacquered finish.

Thank you for your purchase.
stores | catalog | www.potterybarnkids.com
USA 1.800.290.8181